



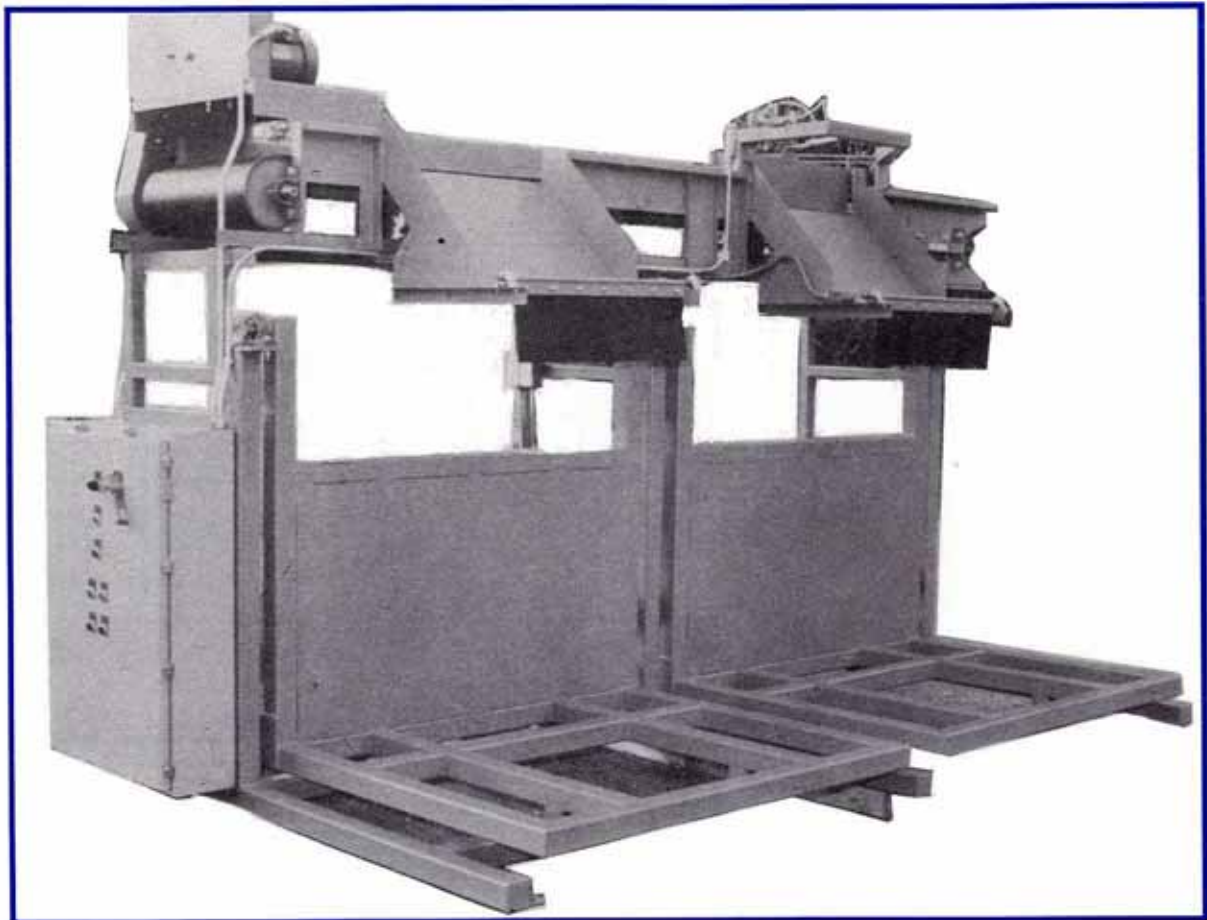
# TNT Manufacturing LLC

Food Process Equipment Sales, Engineering & Service

908 Harvard Drive  
Sun Prairie, WI 53590  
tntmanufacturing@charter.net  
www.tntmanufacturing.biz

(414) 870-2422 Sales & Service  
(608) 669-4720 Administrative  
(608) 318-0981 Fax

## MODEL 201 DOUBLE HEAD CRATE FILLER



### CONSTRUCTION

Sturdy construction insures long life. Either mild or stainless steel of 3" square tubing.

### DRIVE

Consists of an electric motor, which drives a hydraulic pump. The pump powers the cylinders which raise the crates to the filling position. The conveyor is powered by an electric motor which drives the belt through a gear reducer.

### SANITATION

All structural materials are continuous welded to eliminate cracks and crevices. The complete unit can be easily hosed down.

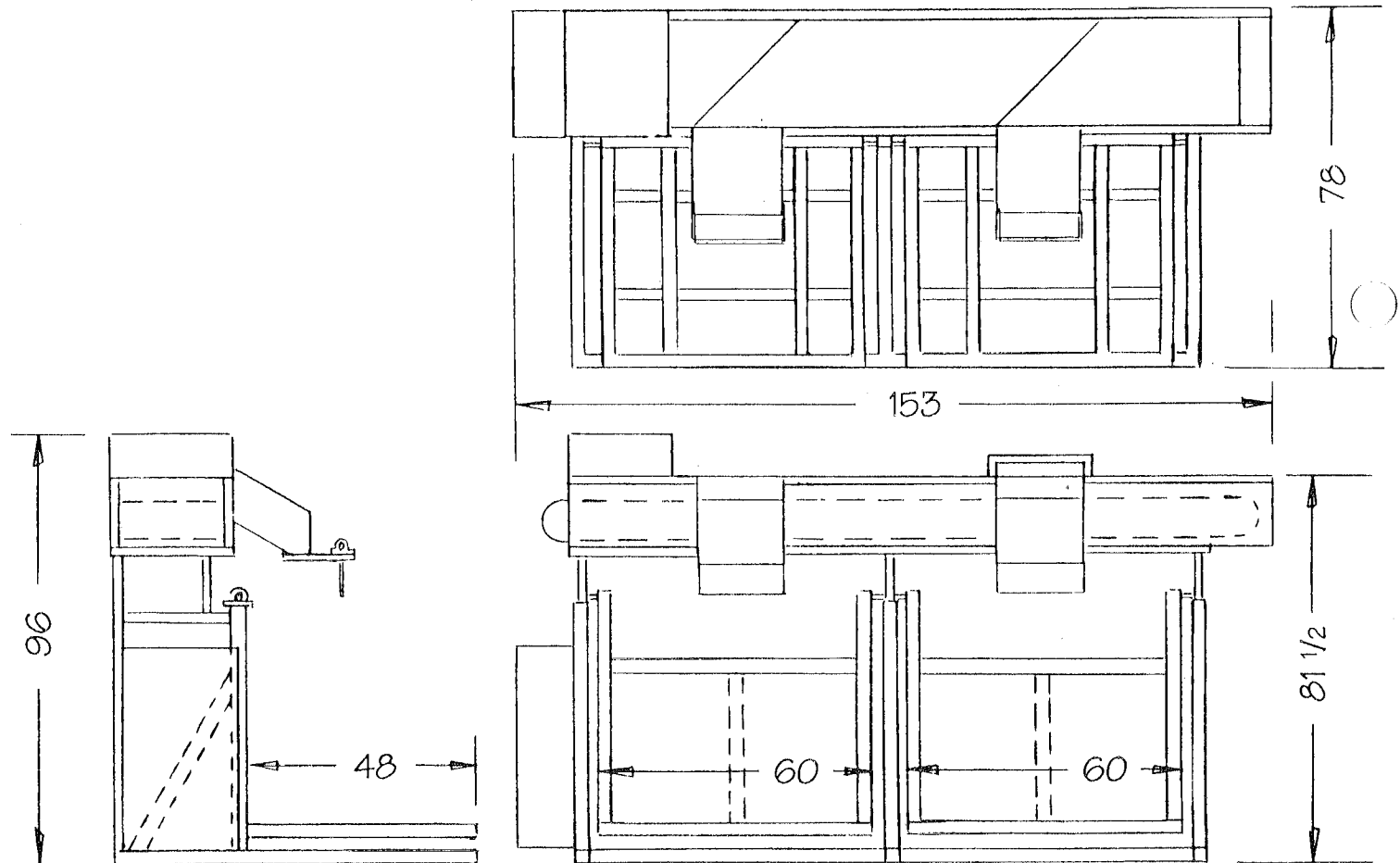
### AUTOMATIC

This unit will fill crates rapidly without damage to the product. Easily controlled by fork lift operator without leaving seat. It fills one crate at a time and when full, automatically switches to the next. In the event there is no empty crate in place, unit automatically shuts off, and is restarted by operator when empty crate is in place.

# MODEL 201 DOUBLE HEAD CRATE FILLER

## SPECIFICATIONS

Capacity .....	Approximately 1500 lbs./minute- potatoes
Crate Size .....	2400 lb. capacity
Hydraulic Pump Motor .....	230/460 Volt, 60 Cycle, 3 Phase, 1 HP
Conveyor Motor .....	230/460 Volt, 60 Cycle, 3 Phase, 3/4 HP



## TNT Manufacturing LLC

Food Process Equipment Sales, Engineering & Service

908 Harvard Drive  
Sun Prairie, WI 53590  
tntmanufacturing@charter.net

(414) 870-2422 Sales & Service  
(608) 669-4720 Administrative  
(608) 318-0981 Fax

[www.tntmanufacturing.biz](http://www.tntmanufacturing.biz)